

Pearson Clinical & Talent Assessment

ASSESSMENTS FOR BETTER
INSIGHTS, BETTER DECISIONS
AND BETTER OUTCOMES



World leaders



IN THE FIELD OF STANDARDISED ASSESSMENTS AND INTERVENTIONS

Pearson Clinical and Talent Assessment, a division of Pearson, is a leading test publisher, founded in 1921. Linked to some of the most respected names in both the psychological and educational fields we provide quality assessments, efficient testing procedures and valid and reliable outcomes to help all individuals.

Our assessments address a range of special educational needs and clinical disorders. They are used by clinical, educational, forensic psychologists; speech and language therapists; occupational therapists, other allied health professionals, researchers and teachers worldwide.

Drawing on our professional knowledge, capabilities and links with major partners, we are dedicated to providing proven standardised assessments and interventions that transform lives and help professionals in education, health services and other areas to provide the best possible diagnosis and care.



Evolving our clinical outcomes

FOR A CHANGING
DEMOGRAPHIC

Reliable and robust assessments are an essential part of Clinical Assessment's adult psychology portfolio. Spanning the fields of cognition, neuropsychology, language and mental health (including personality disorders, forensics, relationships, stress and psychiatric disorders) we take care to ensure that our tools meet the demands of today's changing population.

Tools that bring together ground-breaking theories, reliable practice and better outcome measures are instrumental in helping you make informed decisions; our extensive portfolio addresses this need by bringing together experts in their clinical field.

Our portfolio features: the gold-standard [Wechsler range](#) (WAIS, WASI, WMS). Used internationally by psychologists, these assessments have recently been revised and expanded to respond to clinical demands. Dr Theodore Millon's ground-breaking theories of personality have formed the basis for the bestselling [Millon range](#), allowing assessment of personality and clinical disorders based on the DSM-IV classification system. We also provide tools open to non-psychologists which briefly assess cognitive abilities ([Brief Cognitive Status Exam](#) and [Repeatable Battery for the Assessment of Neuropsychological Status](#)), which answer a global call for earlier intervention and awareness of decline.

“We take care to ensure that our tools meet the demands of today's changing population.”

Championing early assessment and intervention

YOUNG PEOPLE ARE OUR FUTURE
WORKING POPULATION

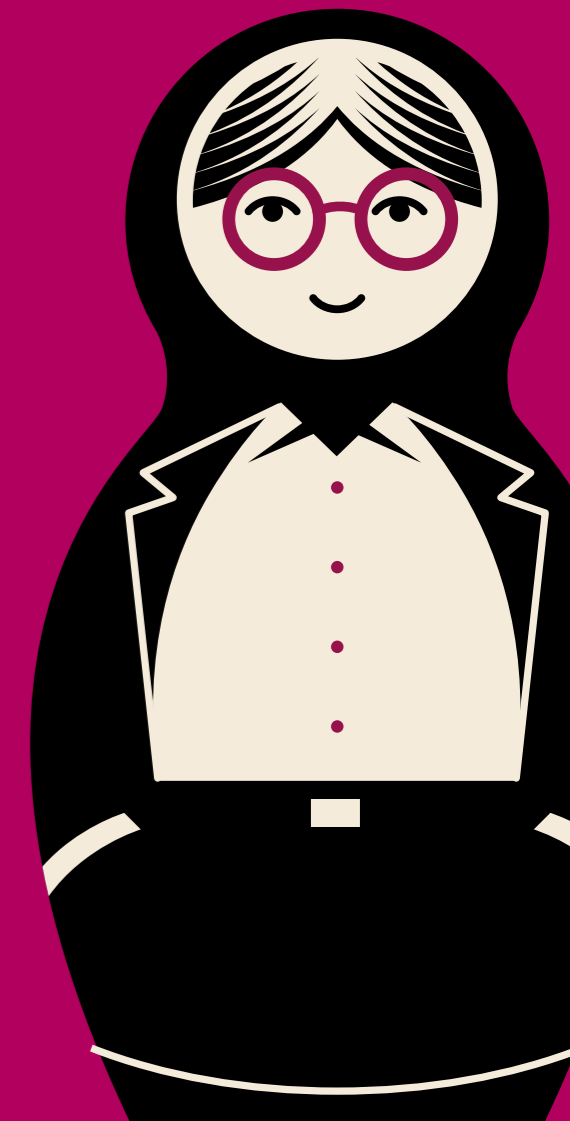
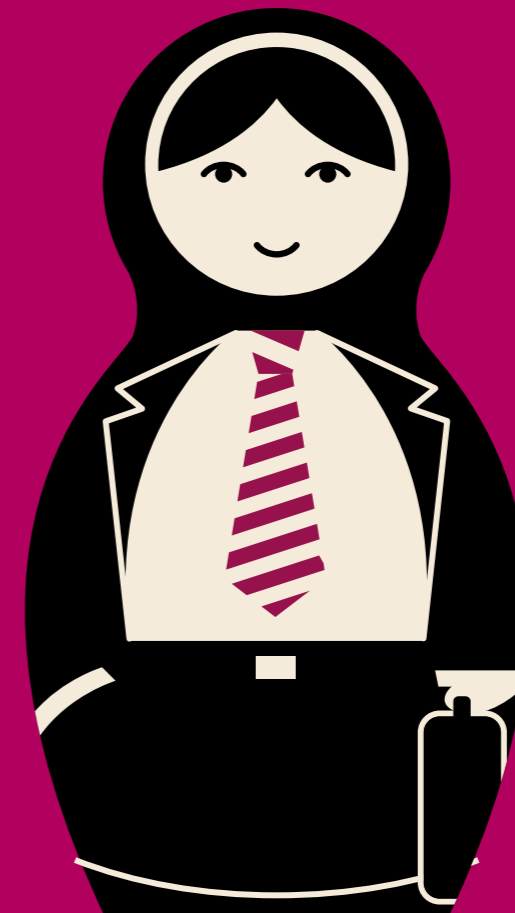
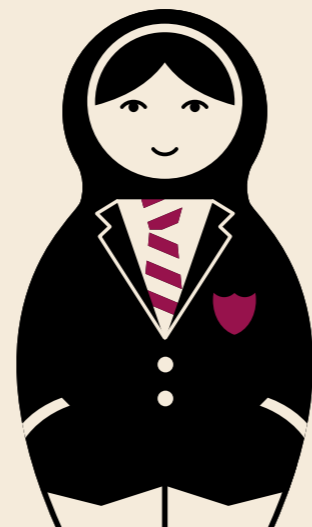
Education and health are key constructs within an individual's lifespan, and the ability to assess an individual's psychological and/or special educational needs early and accurately, is an essential tool in facilitating a healthier and happier future working population.

We are committed to developing reliable and valid tools that can be used by a range of professionals, including Clinical and Educational Psychologists and Specialist Teachers. Whether it's providing you with leading products for assessing adaptive behaviour – **Vineland Adaptive Behavior Scales**, Second Edition, screening for ADD/ADHD and autism spectrum disorders, assessing general ability with the **NEPSY-II** or using the expertise of Aaron Beck to form the

renowned **Beck Depression Inventory®**; together our tools can help you look at the whole individual.

We aim to deliver reliable and comprehensive assessments that lead to improved and maintainable outcomes across the areas of health and education including: cognition, neuropsychology, language, general ability, and tools for use in educational settings that address literacy, working memory, social and emotional difficulties, life skills and function. Responding to the current and established research practices these include the **Wechsler Individual Achievement Test (WIAT)**, **Dyslexia Screening Tests** and **Cogmed** – the innovative web-based intervention for working memory.

“Our tools can help you look at the whole individual.”



Across the lifespan

MAKING ASSESSMENT
A HEALTH CARE
MATTER FROM BIRTH
TO ADULTHOOD



Pearson Assessment is recognised as a valuable partner by allied health professionals. We are renowned for informing clinical decisions and supporting evaluations, with reliable and valid tools that focus on the needs of the individual; within the home, community and wider society and from birth into older age.

Our spectrum of assessment and therapy tools can be used by speech and language therapists, occupational therapists and health-care professionals working with children and adults, and draw on the expertise and innovative practice of leading practitioners.

Internationally respected tools; including the [Rivermead Behavioural Memory Test](#) co-authored by Barbara Wilson, the renowned [Clinical Evaluation of Language Fundamentals \(CELF\)](#), our [Sensory Profiles](#), and the 'invaluable' [Bayley Scales of Infant and Toddler Development](#), Third Edition, and [Movement Assessment Battery for Children](#), and the comprehensive [Vineland Adaptive Behavior Scales](#) – all are core to our portfolio.

“Our tools focus on the needs of the individual; within the home, community and wider society from birth into older age.”

TalentLens

SEE TALENT MORE CLEARLY

TalentLens from Pearson is a global test publisher of online and paper based assessments designed to help organisations recruit and develop the right people in the right way. Our aim is to help you select and develop the right candidates for your organisation.

The TalentLens portfolio includes the following assessments:

- Ability/aptitude tests to help measure intelligence via verbal, numerical and inductive reasoning
- **Watson-Glaser** test of critical thinking ability
- Personality measures for both recruitment and development interventions:

- **SOSIE** – a measurement of traits and values
- **GOLDEN** – a Type personality measure
- **Situational Judgement Tests** designed to accurately replicate the situations and dilemmas faced in particular roles

We have an increasing global presence with TalentLens teams in a number of countries and tests in a number of languages. Our instruments are carefully designed to provide you and your organisation with tools that add real value by enhancing your selection and development processes.

www.TalentLens.com

“Our aim is to help you select and develop the right candidates for your organisation.”



**UNITED KINGDOM
(EUROPE, ASIA, AFRICA & MIDDLE EAST)**

Pearson Clinical & Talent Assessment
80 Strand
London WC2R 0RL
Tel: +44 (0)845 630 8888
Fax: +44 (0)845 630 5555
Email: info@pearsonclinical.co.uk
www.pearsonclinical.co.uk

DENMARK

Pearson Assessment
Larsbjørnsstræde 3
1454 København K
Denmark
Tel: +45 80 88 90 40
Email: info.dk@pearson.com
www.pearsonassessment.dk

FRANCE

ECPA
25, rue de la Plaine
75980 Paris Cedex 20
France
Tel: +33 1 40 09 62 62
Email: info@ecpa.fr
www.ecpa.fr

GERMANY

Pearson Assessment & Information GmbH
Baseler Strasse 35-37
60329 Frankfurt/Main
Germany
Tel: +49 69 75 61 46 0
Email: info.de@pearson.com
www.pearsonassessment.de

NETHERLANDS

Pearson Assessment and
Information B.V.
Radarweg 60-A1
1043 NT Amsterdam
Nederland
Tel: + 31 (0)20 581 5500
Email: info-nl@pearson.com
www.pearson-nl.com

NORWAY

Pearson Assessment
Igeldammgatan 22A
112 49 Stockholm
Sweden
Tel: +47 800 164 02
Email: info.no@pearson.com
www.pearsonassessment.no

SPAIN

Pearson
Clinical and Talent Assessment Spain
Ribera del Loira 28,
28042 Madrid
Espana
Email: pedidos@pearsonpsychcorp.es
www.pearsonpsychcorp.es

SWEDEN

Pearson Sweden AB
Igeldammgatan 22A
112 49 Stockholm
Sweden
Tel: + 46 8 619 76 00 (Sweden)
Email: info.se@pearson.com
www.pearsonassessment.se

INDIA

Pearson Clinical and Talent Assessment
3rd Floor Alfa Center, Unit B
20, Koramangala Inner Ring Road
Bangalore – 560047
India
Tel: (91) 080 4215 3440
Email: info@pearsonclinical.in
www.pearsonclinical.in

CANADA

Pearson Canada Assessment Inc
55 Horner Avenue
Toronto, Ontario M8Z 4X6
Canada
Tel: +1 866 335 8418
Email: cs.canada@pearson.com
www.psychcorp.ca

UNITED STATES OF AMERICA

Pearson
19500 Bulverde Road
San Antonio, TX 78259-3701
USA
Tel: 800.627.7271
Email: clinicalcustomersupport@pearson.com
www.psychcorp.com

AUSTRALIA / NEW ZEALAND

Pearson Clinical and Talent Assessment
Level 6, 287 Elizabeth St
Sydney, NSW, 2000, Australia
Tel: 1800 882 385 (Aus)
Tel: 0800 942 722 (NZ)
Email: info@pearsonpsychcorp.com.au
www.pearsonpsychcorp.com.au

